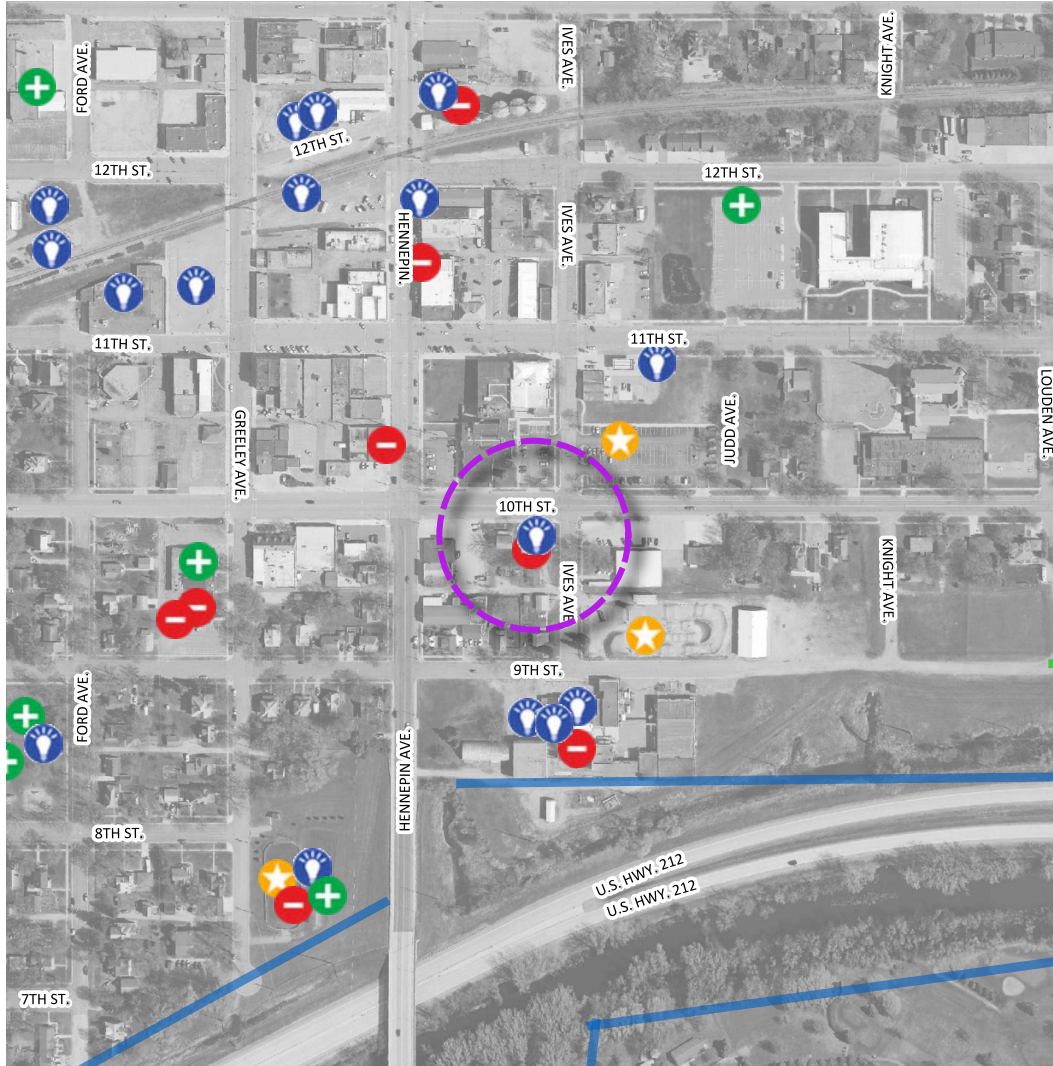


City of Glencoe Comprehensive Plan

Place to focus investment

Individual comments and final results obtained from the plan's WIKIMAPPING tool.



0 0.1 0.2 0.3 mi



TYPE: Place to focus investment

Date created: 2021-01-30 14:54:45

Data feature 408316

Comment received:

Purchase county lot. Remove dumpsters.
 Dumpster Park can be relocated out of downtown area on a different county property.

Legend

- | | |
|-----------------------------------|----------------------------------|
| POINT Information Received | LINE Information Received |
| A good place / an asset | A new BIKING route |
| A problem or issue | A new WALKING route |
| An important destination | |
| Place to focus investment | |

City of Glencoe Comprehensive Plan

Place to focus investment

Individual comments and final results obtained from the plan's WIKIMAPPING tool.



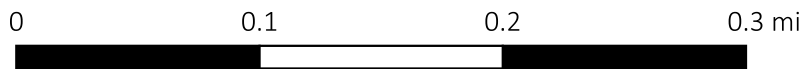
TYPE: Place to focus investment

Date created: 2020-11-25 02:42:26

Data feature 406538

Comment received:

Retail Site



Legend

POINT Information Received

LINE Information Received

A good place / an asset

A new BIKING route

A problem or issue

A new WALKING route

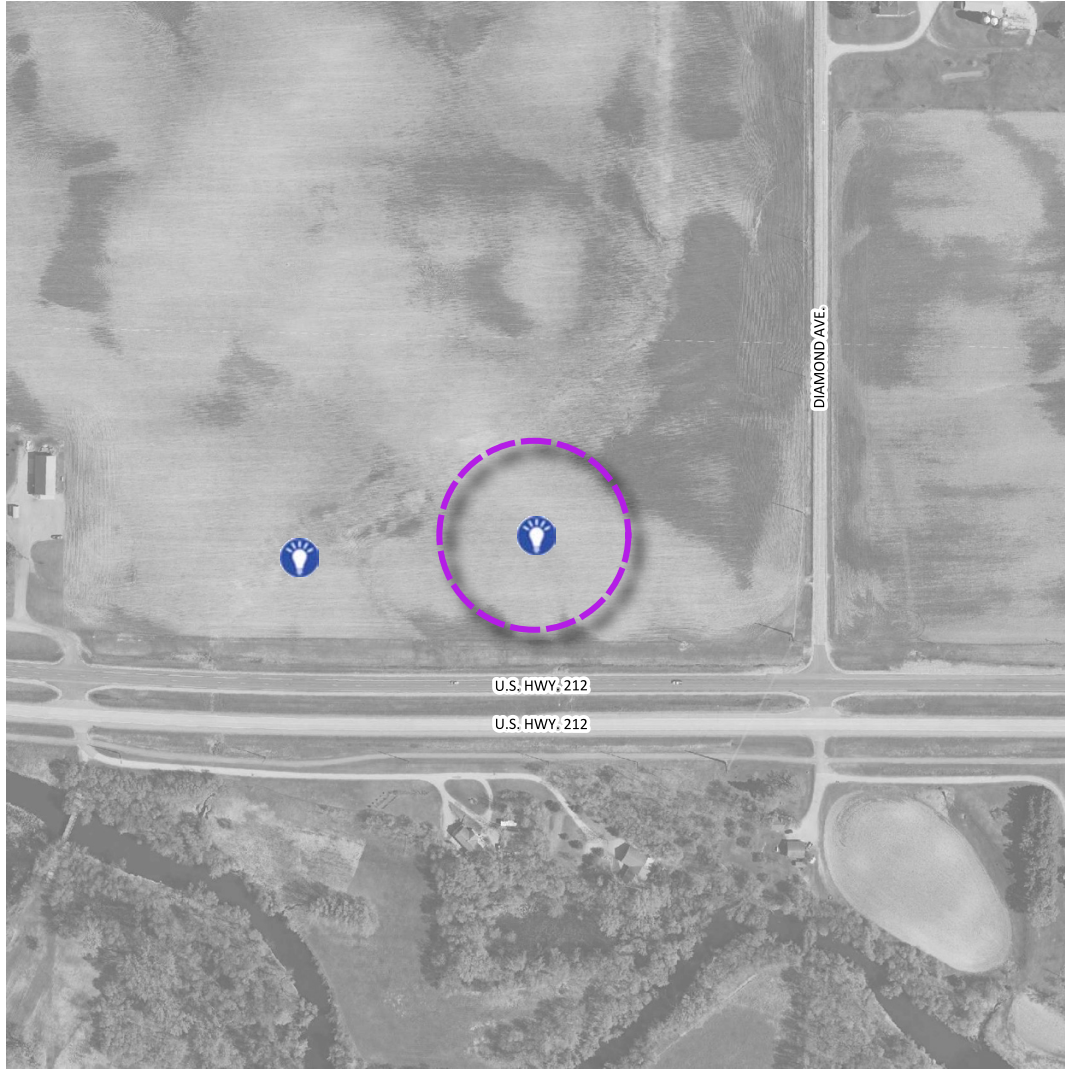
An important destination

Place to focus investment

City of Glencoe Comprehensive Plan

Place to focus investment

Individual comments and final results obtained from the plan's WIKIMAPPING tool.



TYPE: Place to focus investment

Date created: 2020-11-25 02:42:01

Data feature 406537

Comment received:

Retail Site

Legend

POINT Information Received	LINE Information Received
A good place / an asset	A new BIKING route
A problem or issue	A new WALKING route
An important destination	
Place to focus investment	

0 0.1 0.2 0.3 mi



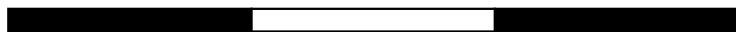
City of Glencoe Comprehensive Plan

Place to focus investment

Individual comments and final results obtained from the plan's WIKIMAPPING tool.



0 0.1 0.2 0.3 mi



TYPE: Place to focus investment

Date created: 2020-11-25 02:40:40

Data feature 406536

Comment received:

Multiple unit housing site

Legend

POINT Information Received

LINE Information Received



A good place / an asset

A new BIKING route



A problem or issue

A new WALKING route



An important destination

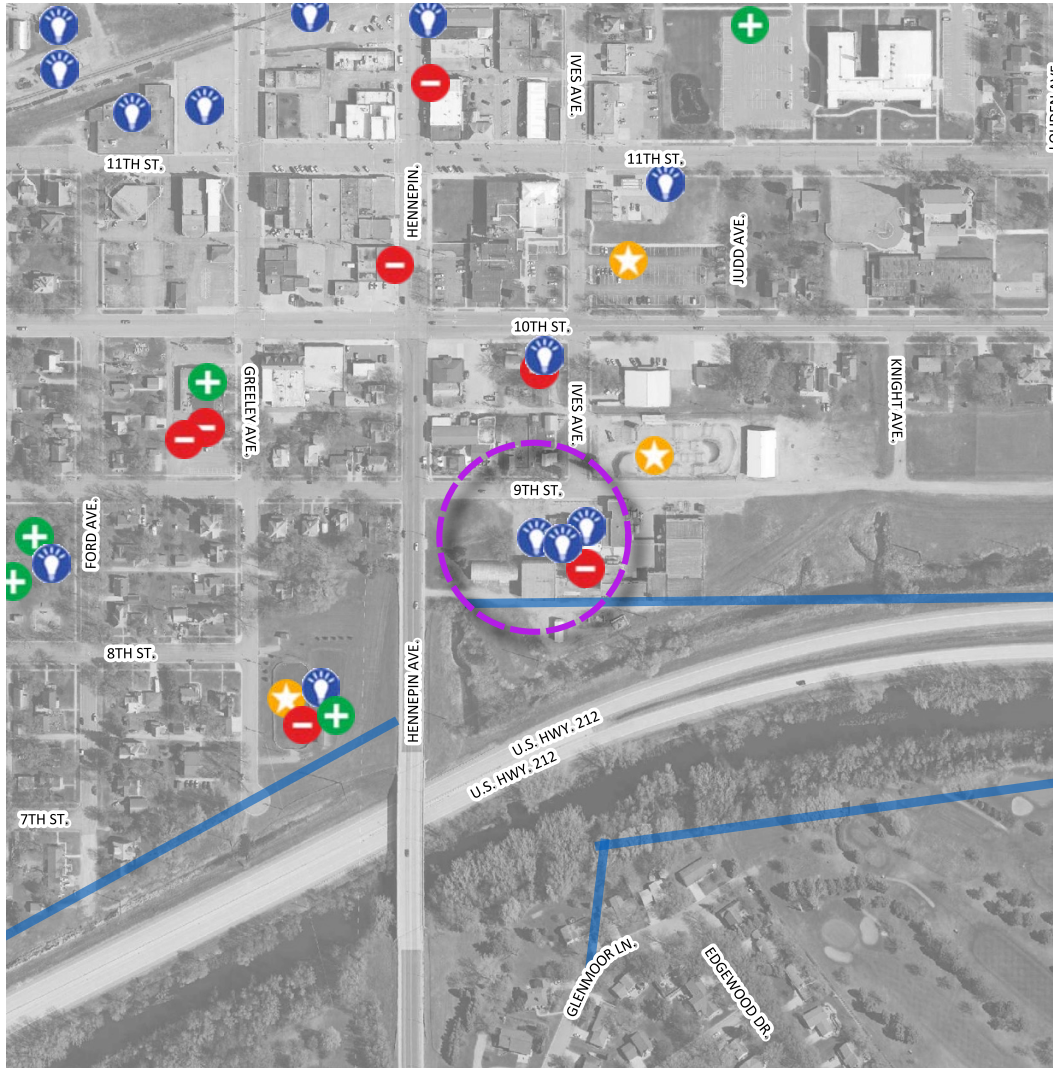


Place to focus investment

City of Glencoe Comprehensive Plan

Place to focus investment

Individual comments and final results obtained from the plan's WIKIMAPPING tool.



0 0.1 0.2 0.3 mi



TYPE: Place to focus investment

Date created: 2021-02-09 16:08:06

Data feature 408483

Comment received:

Future home for Public Safety Building

Legend

POINT Information Received

LINE Information Received



A good place / an asset

A new BIKING route



A problem or issue

A new WALKING route



An important destination

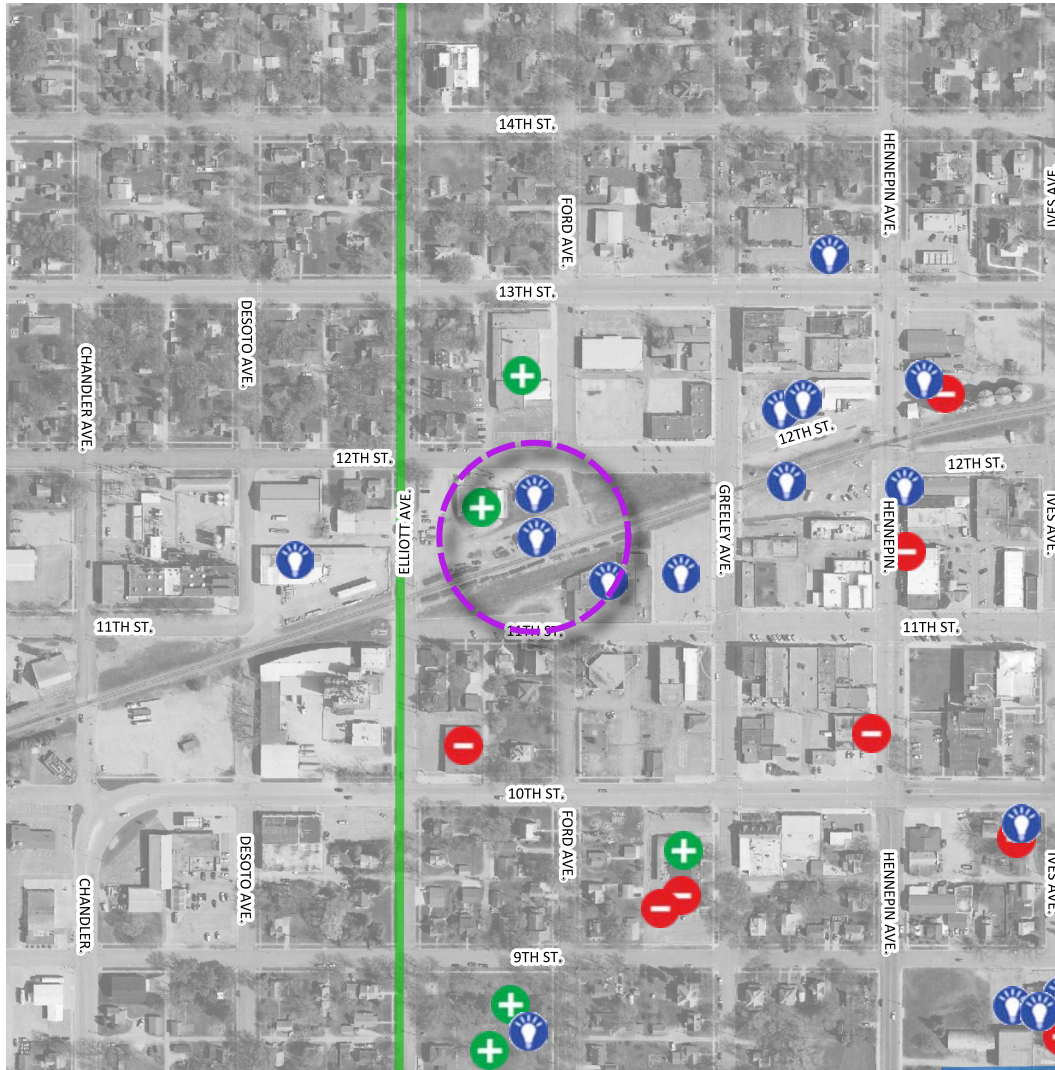


Place to focus investment

City of Glencoe Comprehensive Plan

Place to focus investment

Individual comments and final results obtained from the plan's WIKIMAPPING tool.



0 0.1 0.2 0.3 mi



TYPE: Place to focus investment

Date created: 2021-02-09 16:09:53

Data feature 408485

Comment received:

Restore old depot and use as public restrooms

Legend

POINT Information Received

LINE Information Received

A good place / an asset

A new BIKING route

A problem or issue

A new WALKING route

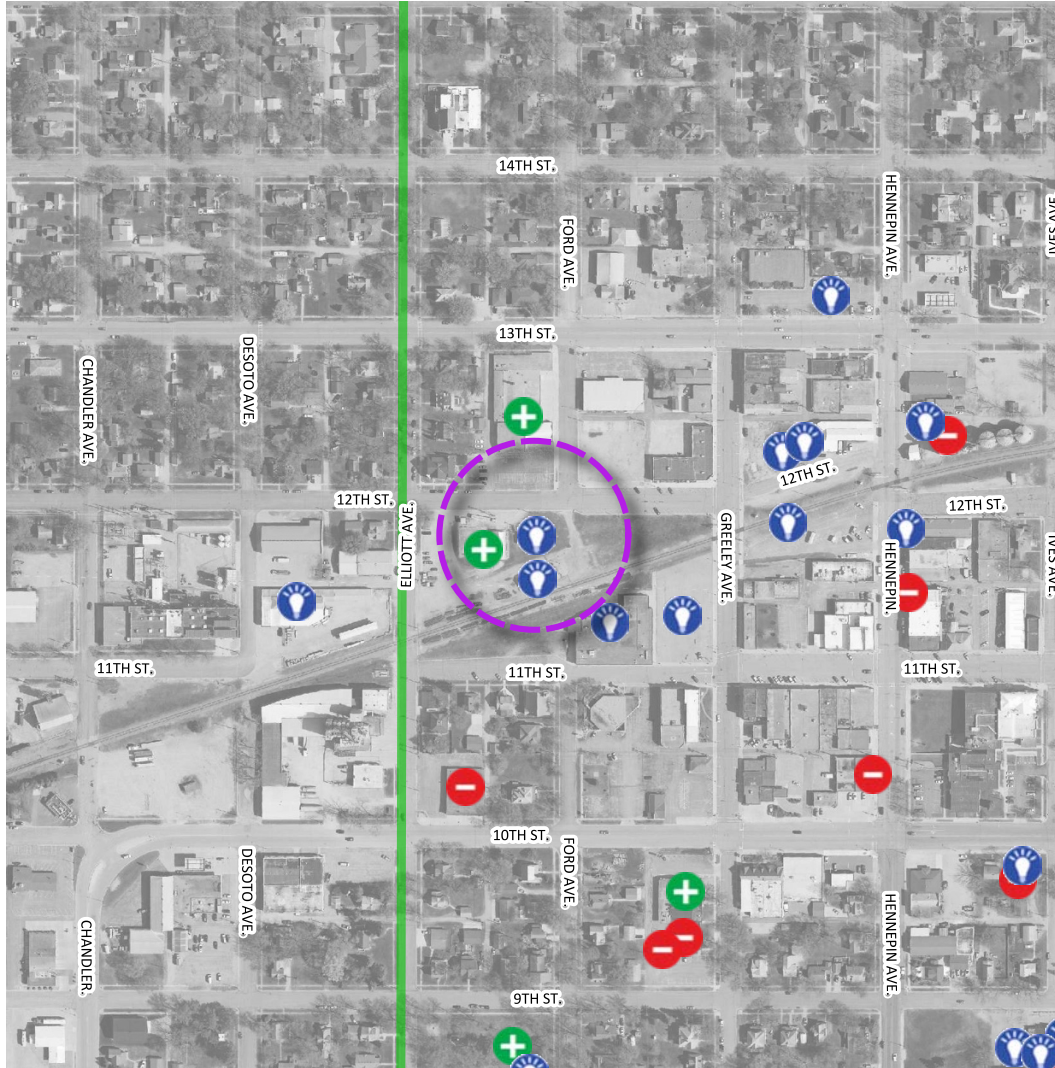
An important destination

Place to focus investment

City of Glencoe Comprehensive Plan

Place to focus investment

Individual comments and final results obtained from the plan's WIKIMAPPING tool.



0 0.1 0.2 0.3 mi



TYPE: Place to focus investment

Date created: 2021-02-09 16:10:31

Data feature 408486

Comment received:

Location for downtown apartment building

Legend

POINT Information Received

LINE Information Received

A good place / an asset

A new BIKING route

A problem or issue

A new WALKING route

An important destination

Place to focus investment

City of Glencoe Comprehensive Plan

Place to focus investment

Individual comments and final results obtained from the plan's WIKIMAPPING tool.



0 0.1 0.2 0.3 mi



TYPE: Place to focus investment

Date created: 2021-02-09 21:36:12

Data feature 408500

Comment received:

This would be a great space for community gardens and formal gardens. Maybe a classy looking sculptural splash pad like the one at the Minnesota Zoo where it is mostly fountains and statues, rather than a play ground look, and could mix in with the gardens.

Legend

POINT Information Received

- A good place / an asset
- A problem or issue
- An important destination
- Place to focus investment

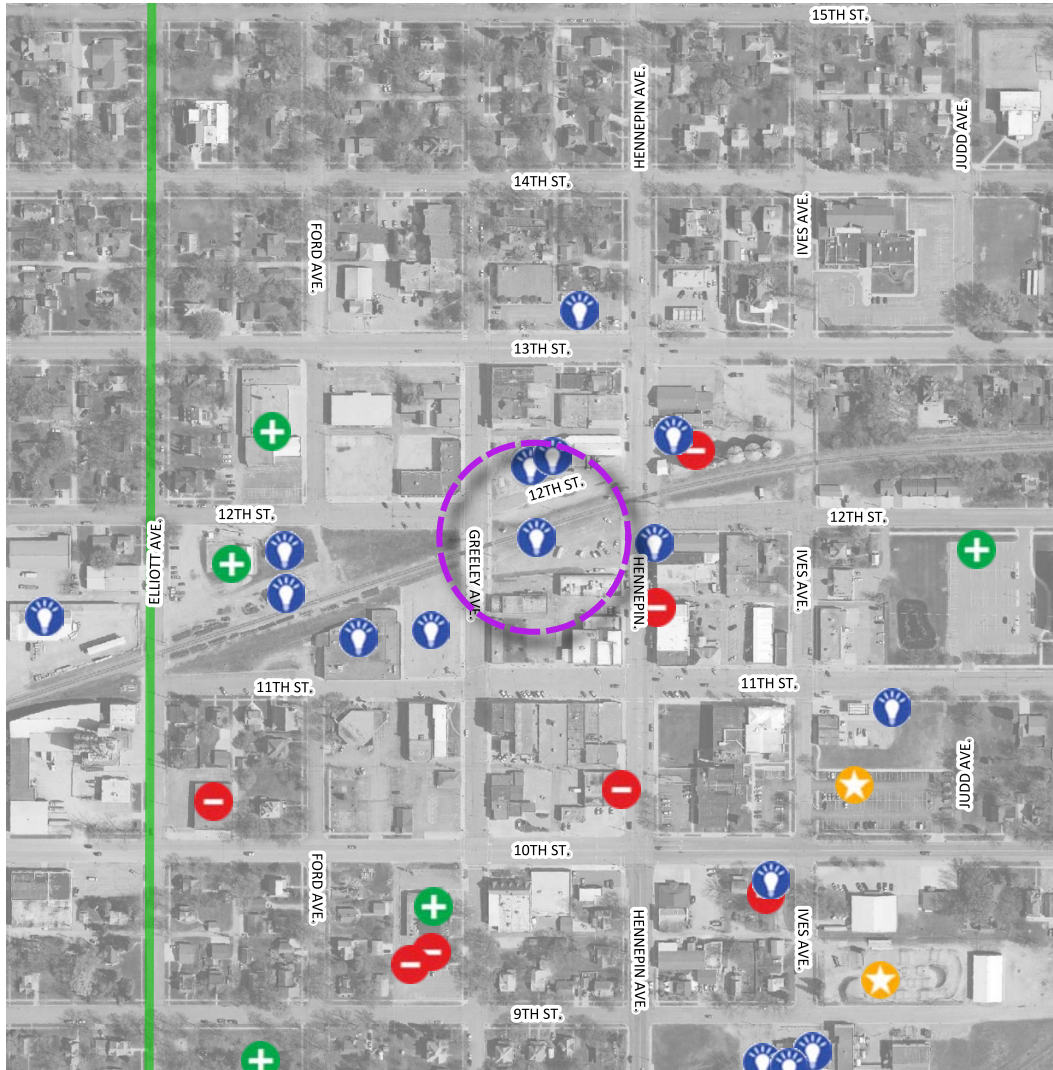
LINE Information Received

- A new BIKING route
- A new WALKING route

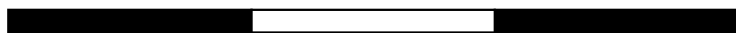
City of Glencoe Comprehensive Plan

Place to focus investment

Individual comments and final results obtained from the plan's WIKIMAPPING tool.



0 0.1 0.2 0.3 mi



TYPE: Place to focus investment

Date created: 2021-02-09 21:48:30

Data feature 408501

Comment received:

Plant a corridor of blossoming trees all along both sides of the train track where it cuts through downtown.

Legend

POINT Information Received

LINE Information Received

A good place / an asset

A new BIKING route

A problem or issue

A new WALKING route

An important destination

Place to focus investment

City of Glencoe Comprehensive Plan

Place to focus investment

Individual comments and final results obtained from the plan's WIKIMAPPING tool.



0 0.1 0.2 0.3 mi



TYPE: Place to focus investment

Date created: 2021-02-09 21:57:11

Data feature 408503

Comment received:

In the summer use this as a bowling green, bocce ball lawn, picnic site, build a gazebo. More trees around it to beautify and hang lights on them in the winter for night time skating and sledding and holiday enjoyment. The fencing along the sledding hill and 212 needs landscaping to create a wind block and noise barrier from the highway.

Legend

POINT Information Received

- A good place / an asset
- A problem or issue
- An important destination
- Place to focus investment

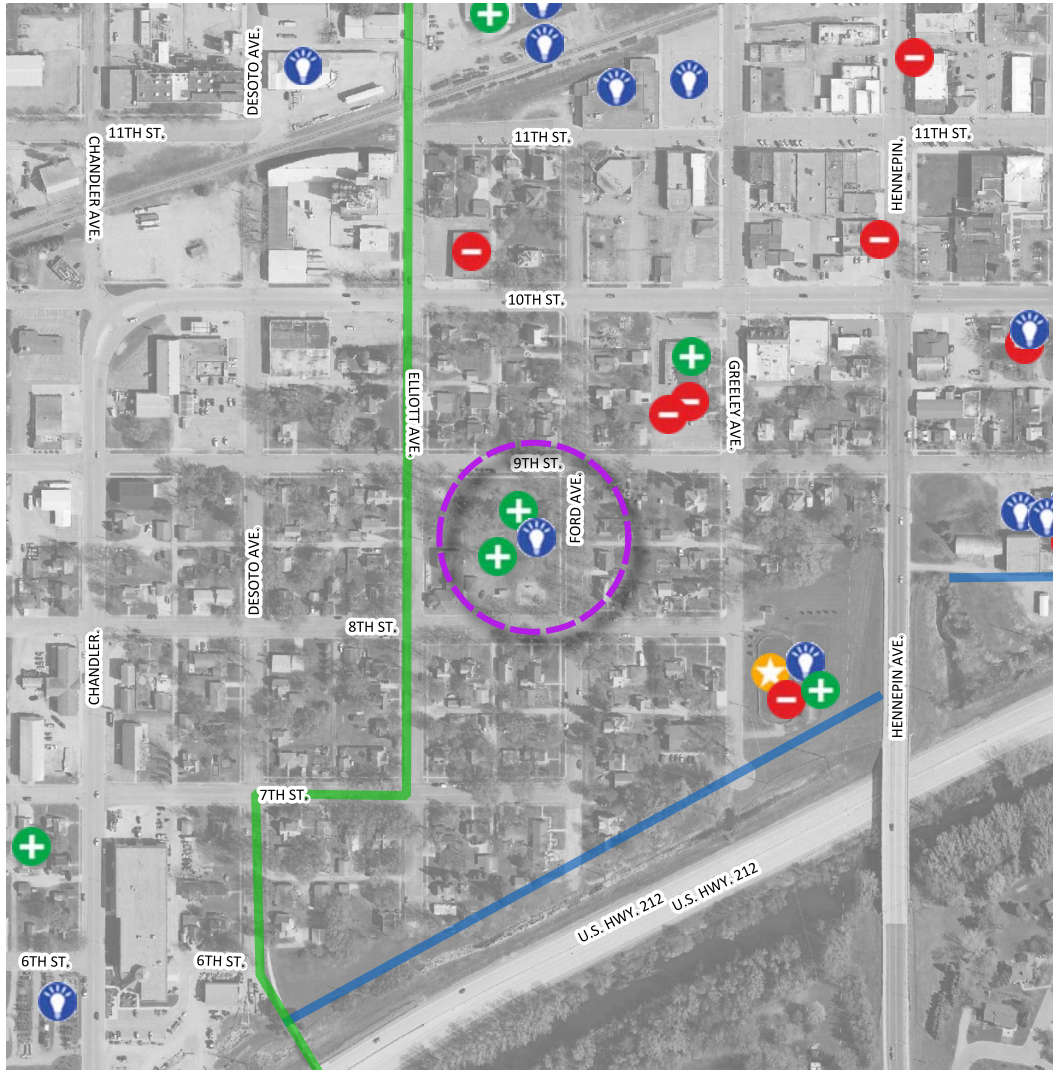
LINE Information Received

- A new BIKING route
- A new WALKING route

City of Glencoe Comprehensive Plan

Place to focus investment

Individual comments and final results obtained from the plan's WIKIMAPPING tool.



0 0.1 0.2 0.3 mi



TYPE: Place to focus investment

Date created: 2021-02-09 21:58:05

Data feature 408504

Comment received:

Splash pad here

Legend

POINT Information Received

LINE Information Received

A good place / an asset

A new BIKING route

A problem or issue

A new WALKING route

An important destination

Place to focus investment

City of Glencoe Comprehensive Plan

Place to focus investment

Individual comments and final results obtained from the plan's WIKIMAPPING tool.



0 0.1 0.2 0.3 mi



TYPE: Place to focus investment

Date created: 2020-11-20 21:09:30

Data feature 406438

Comment received:

Helen Baker School Site

Legend

POINT Information Received

LINE Information Received

A good place / an asset

A new BIKING route

A problem or issue

A new WALKING route

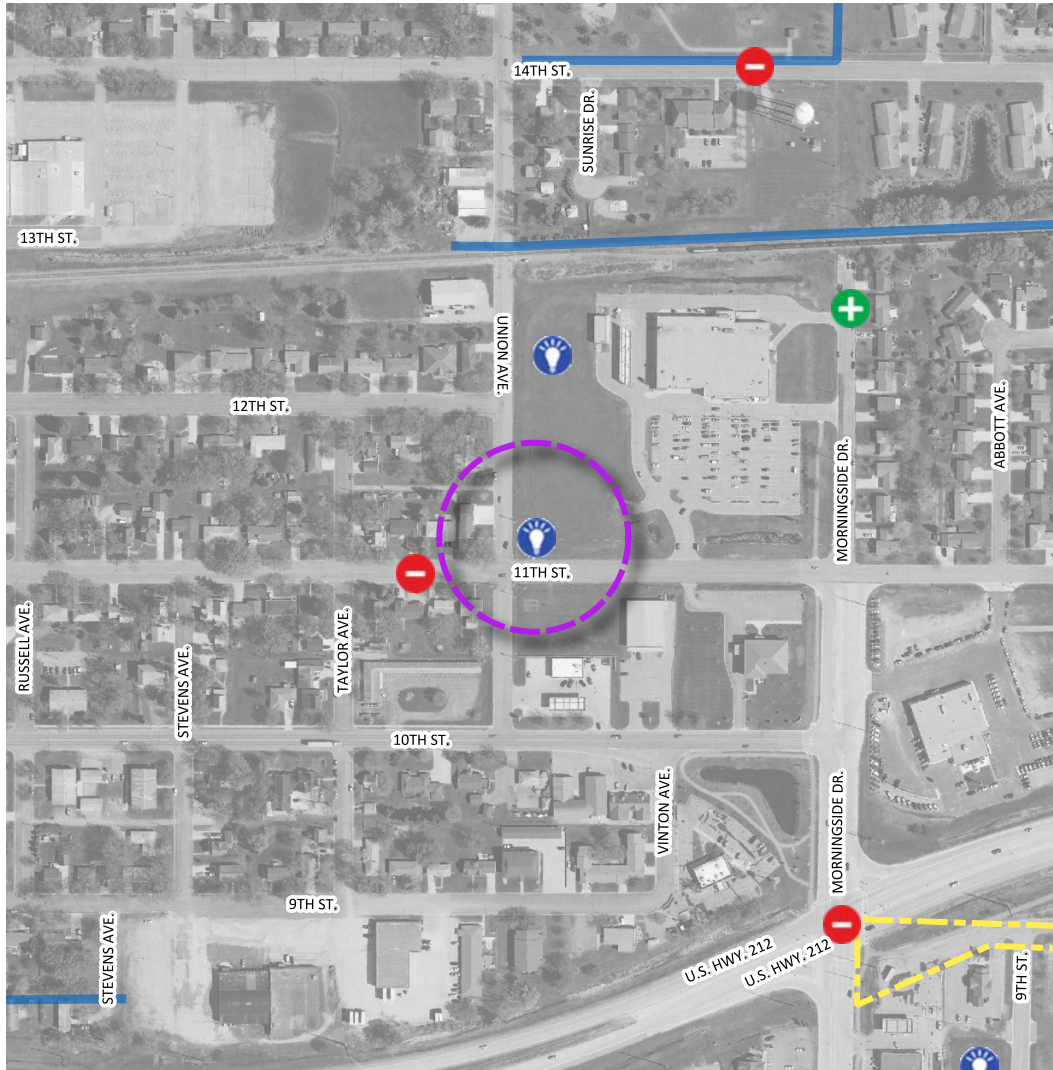
An important destination

Place to focus investment

City of Glencoe Comprehensive Plan

Place to focus investment

Individual comments and final results obtained from the plan's WIKIMAPPING tool.



TYPE: Place to focus investment

Date created: 2021-02-11 14:45:02

Data feature 408580

Comment received:

Sidewalk in this area with access to coborns and past to kwip trip. Also ove the tracks towards Oscar Olson park

Legend

POINT Information Received

LINE Information Received



A good place / an asset

A new BIKING route



A problem or issue

A new WALKING route



An important destination



Place to focus investment

City of Glencoe Comprehensive Plan

Place to focus investment

Individual comments and final results obtained from the plan's WIKIMAPPING tool.



TYPE: Place to focus investment

Date created: 2021-02-26 21:39:34

Data feature 409195

Comment received:

Legend

POINT Information Received

LINE Information Received

A good place / an asset

A new BIKING route

A problem or issue

A new WALKING route

An important destination

Place to focus investment

0 0.1 0.2 0.3 mi



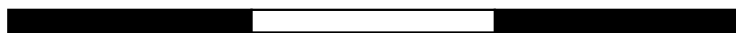
City of Glencoe Comprehensive Plan

Place to focus investment

Individual comments and final results obtained from the plan's WIKIMAPPING tool.



0 0.1 0.2 0.3 mi



TYPE: Place to focus investment

Date created: 2021-02-26 21:40:56

Data feature 409196

Comment received:

Legend

POINT Information Received

LINE Information Received



A good place / an asset

A new BIKING route



A problem or issue

A new WALKING route



An important destination



Place to focus investment

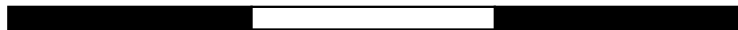
City of Glencoe Comprehensive Plan

Place to focus investment

Individual comments and final results obtained from the plan's WIKIMAPPING tool.



0 0.1 0.2 0.3 mi



TYPE: Place to focus investment

Date created: 2020-11-25 02:38:54

Data feature 406535

Comment received:

Prime Affordable Housing lots

Legend

POINT Information Received



A good place / an asset



A problem or issue



An important destination



Place to focus investment

LINE Information Received

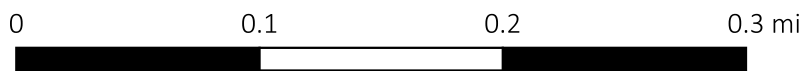
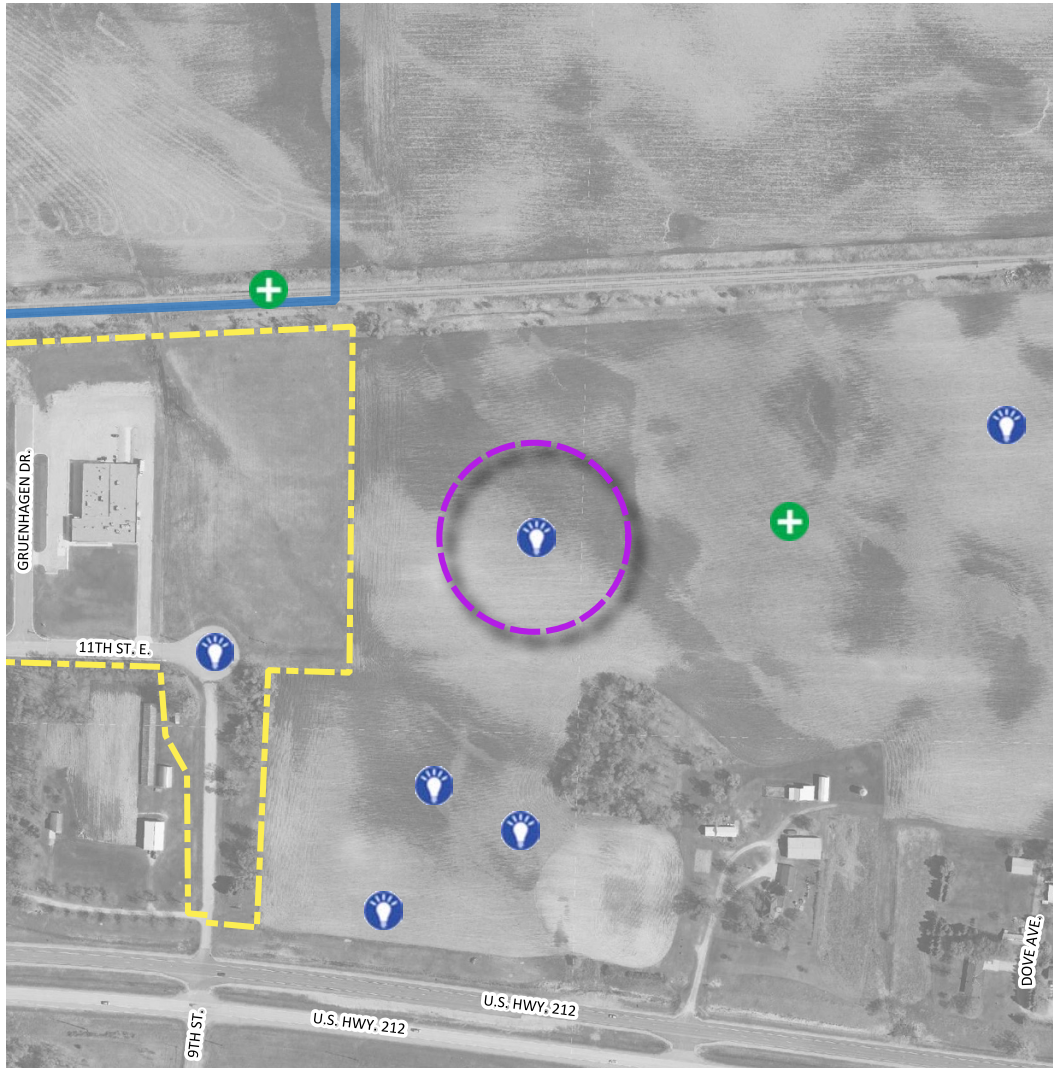
 A new BIKING route

 A new WALKING route

City of Glencoe Comprehensive Plan

Place to focus investment

Individual comments and final results obtained from the plan's WIKIMAPPING tool.



TYPE: Place to focus investment

Date created: 2020-11-20 21:07:45

Data feature 406437

Comment received:

New Industrial area

Legend

POINT Information Received

LINE Information Received

A good place / an asset

A new BIKING route

A problem or issue

A new WALKING route

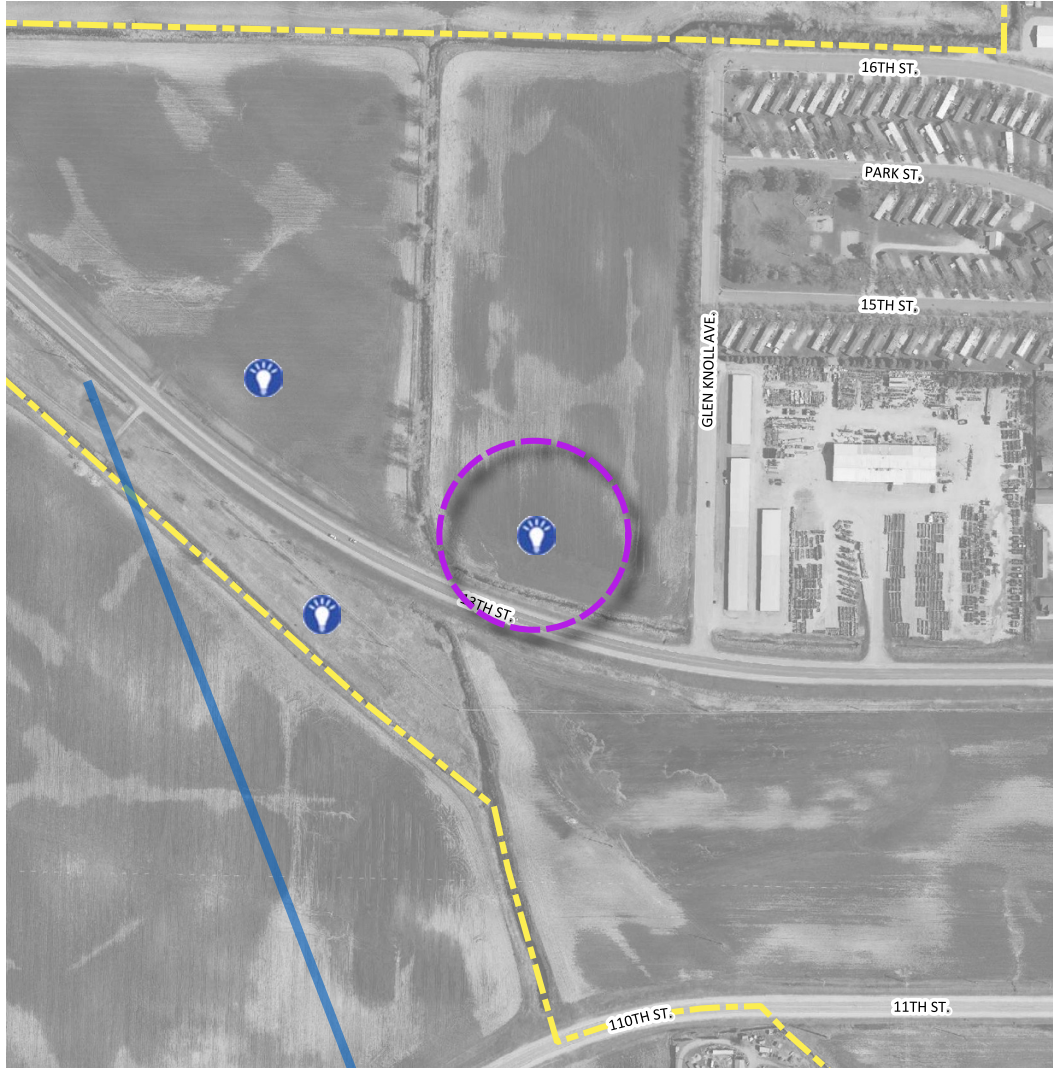
An important destination

Place to focus investment

City of Glencoe Comprehensive Plan

Place to focus investment

Individual comments and final results obtained from the plan's WIKIMAPPING tool.



0 0.1 0.2 0.3 mi



TYPE: Place to focus investment

Date created: 2020-11-23 17:17:14

Data feature 406510

Comment received:

The entire area on either or both sides of Hwy 22 from Miller Mfg to Glen Knoll Ave is perfect for retail/commercial development.

Legend

POINT Information Received

LINE Information Received



A good place / an asset

A new BIKING route



A problem or issue

A new WALKING route



An important destination

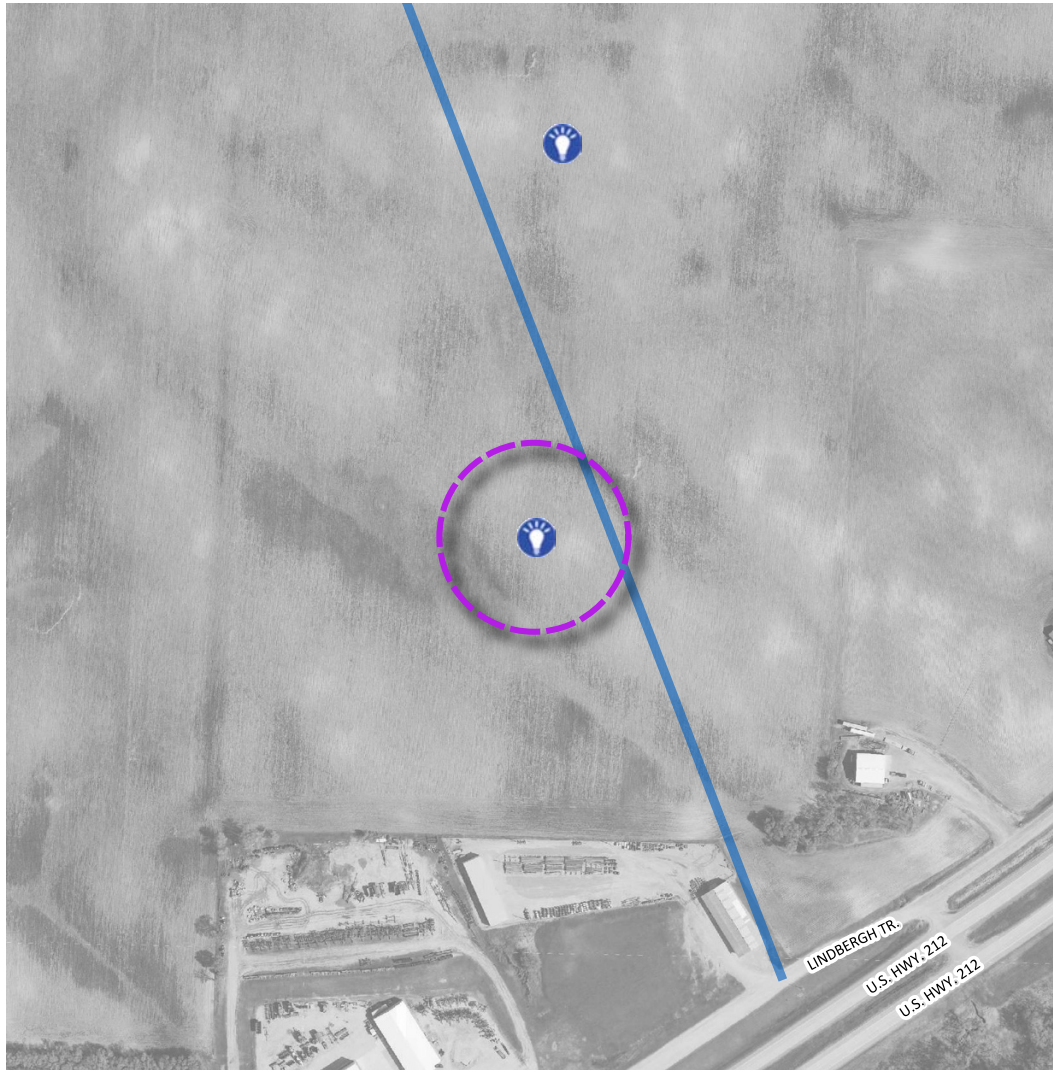


Place to focus investment

City of Glencoe Comprehensive Plan

Place to focus investment

Individual comments and final results obtained from the plan's WIKIMAPPING tool.



TYPE: Place to focus investment

Date created: 2020-11-25 02:35:39

Data feature 406533

Comment received:

More Commercial Opportunity

Legend

POINT Information Received

A good place / an asset

A problem or issue

An important destination

Place to focus investment

LINE Information Received

A new BIKING route

A new WALKING route

0 0.1 0.2 0.3 mi



City of Glencoe Comprehensive Plan

Place to focus investment

Individual comments and final results obtained from the plan's WIKIMAPPING tool.



TYPE: Place to focus investment

Date created: 2020-11-25 02:35:14

Data feature 406532

Comment received:

New commercial opportunity

Legend

POINT Information Received

- A good place / an asset
- A problem or issue
- An important destination
- Place to focus investment

LINE Information Received

- A new BIKING route
- A new WALKING route

City of Glencoe Comprehensive Plan

Place to focus investment

Individual comments and final results obtained from the plan's WIKIMAPPING tool.



TYPE: Place to focus investment

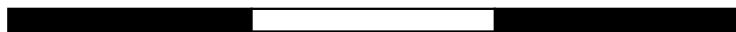
Date created: 2020-11-25 02:34:35

Data feature 406531

Comment received:

New Commercial Opportunity

0 0.1 0.2 0.3 mi



Legend

POINT Information Received

LINE Information Received

A good place / an asset

A new BIKING route

A problem or issue

A new WALKING route

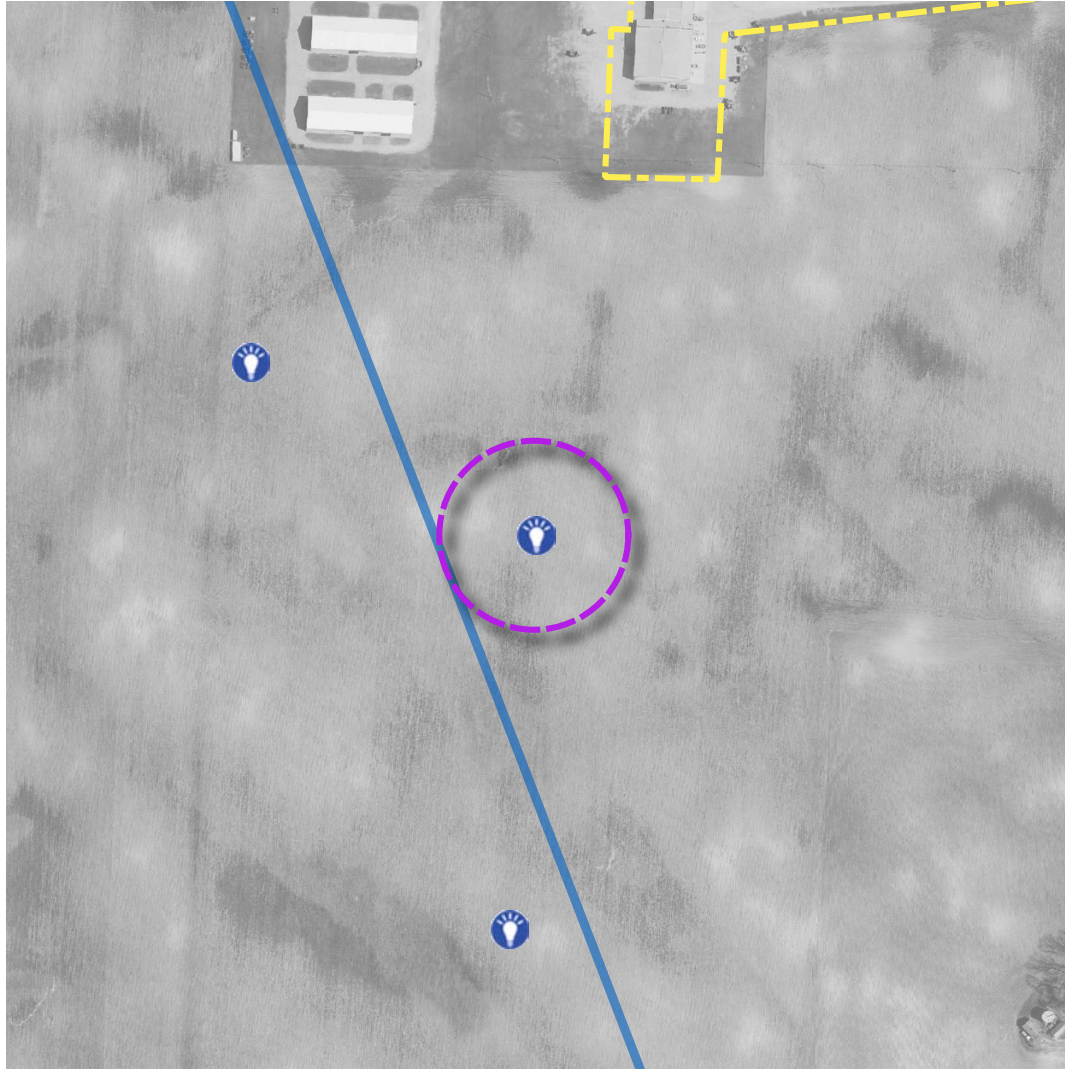
An important destination

Place to focus investment

City of Glencoe Comprehensive Plan

Place to focus investment

Individual comments and final results obtained from the plan's WIKIMAPPING tool.



TYPE: Place to focus investment

Date created: 2020-11-25 02:34:09

Data feature 406530

Comment received:

New commercial opportunity

Legend

POINT Information Received	LINE Information Received
A good place / an asset	A new BIKING route
A problem or issue	A new WALKING route
An important destination	
Place to focus investment	

City of Glencoe Comprehensive Plan

Place to focus investment

Individual comments and final results obtained from the plan's WIKIMAPPING tool.



0 0.1 0.2 0.3 mi



TYPE: Place to focus investment

Date created: 2020-11-23 17:19:28

Data feature 406511

Comment received:

I agree. Hotel, restaurant, 2-3 screen movie theater, small strip mall would be perfect here.

Legend

POINT Information Received



A good place / an asset



A problem or issue



An important destination



Place to focus investment

LINE Information Received

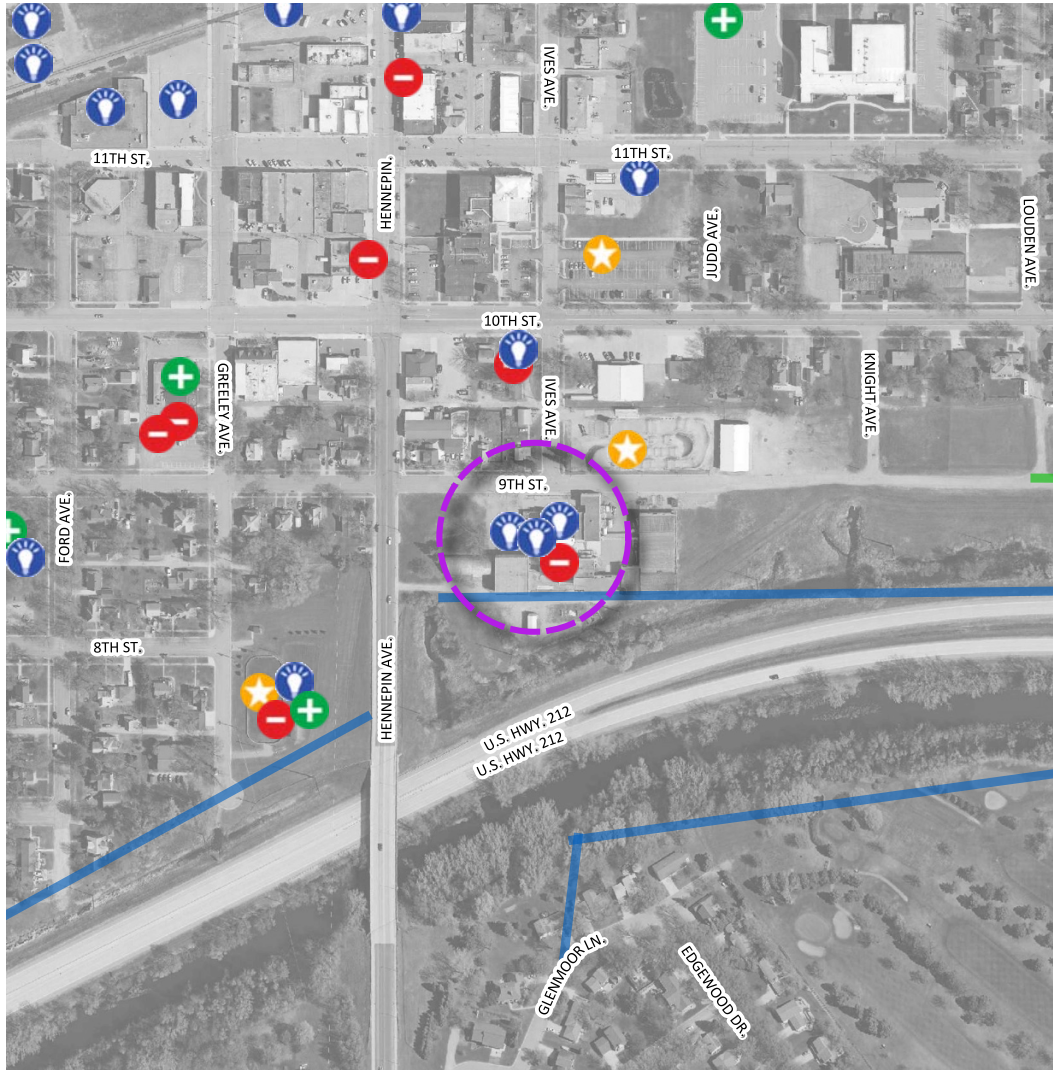
A new BIKING route

A new WALKING route

City of Glencoe Comprehensive Plan

Place to focus investment

Individual comments and final results obtained from the plan's WIKIMAPPING tool.



0 0.1 0.2 0.3 mi



TYPE: Place to focus investment

Date created: 2021-04-07 02:46:00

Data feature 410509

Comment received:

Fire/Police Department

Legend

POINT Information Received

LINE Information Received



A good place / an asset

A new BIKING route



A problem or issue

A new WALKING route



An important destination

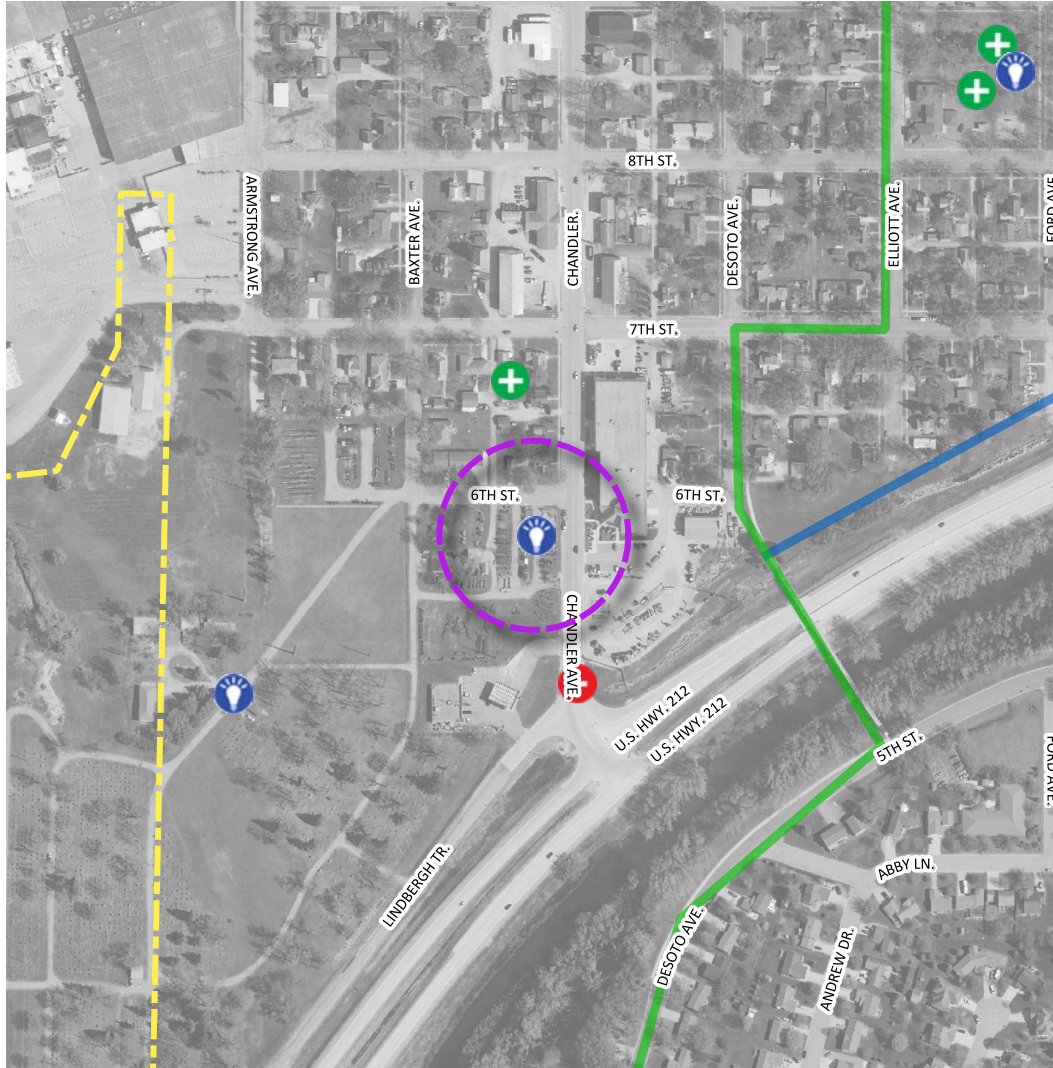


Place to focus investment

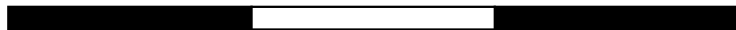
City of Glencoe Comprehensive Plan

Place to focus investment

Individual comments and final results obtained from the plan's WIKIMAPPING tool.



0 0.1 0.2 0.3 mi



TYPE: Place to focus investment

Date created: 2020-11-23 17:22:26

Data feature 406512

Comment received:

Perfect spot for a fast food restaurant.

Legend

POINT Information Received

LINE Information Received



A good place / an asset

A new BIKING route



A problem or issue

A new WALKING route



An important destination



Place to focus investment

City of Glencoe Comprehensive Plan

Place to focus investment

Individual comments and final results obtained from the plan's WIKIMAPPING tool.



TYPE: Place to focus investment

Date created: 2020-11-23 22:30:12

Data feature 406516

Comment received:

Private Land. Possible Green Space. Large area

Legend

POINT Information Received

A good place / an asset

A problem or issue

An important destination

Place to focus investment

LINE Information Received

A new BIKING route

A new WALKING route

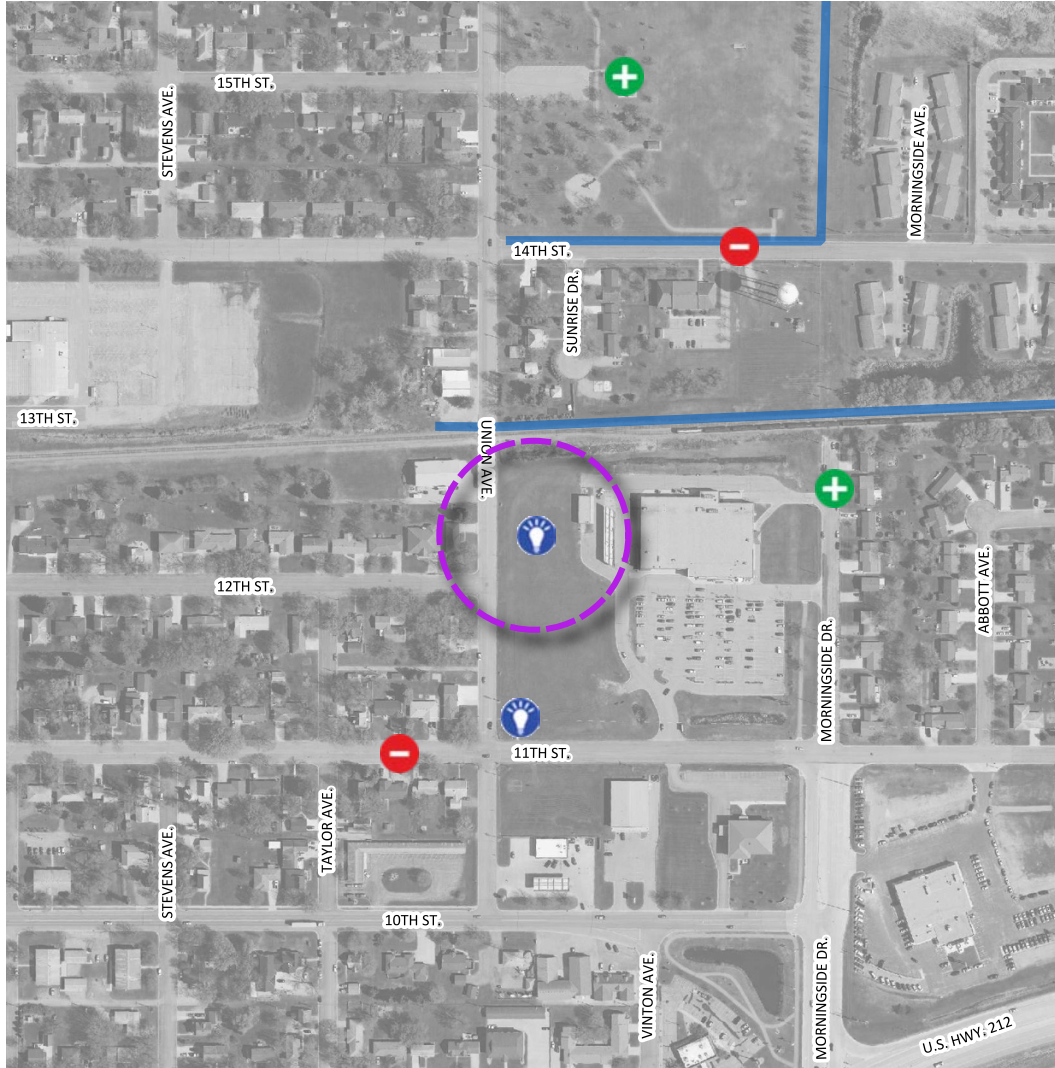
0 0.1 0.2 0.3 mi



City of Glencoe Comprehensive Plan

Place to focus investment

Individual comments and final results obtained from the plan's WIKIMAPPING tool.



0 0.1 0.2 0.3 mi



TYPE: Place to focus investment

Date created: 2021-04-07 03:04:41

Data feature 410512

Comment received:

Strip mall

Legend

POINT Information Received

LINE Information Received



A good place / an asset

A new BIKING route



A problem or issue

A new WALKING route



An important destination



Place to focus investment

City of Glencoe Comprehensive Plan

Place to focus investment

Individual comments and final results obtained from the plan's WIKIMAPPING tool.



0 0.1 0.2 0.3 mi



TYPE: Place to focus investment

Date created: 2021-04-07 03:05:35

Data feature 410513

Comment received:

Future investment for housing

Legend

POINT Information Received

LINE Information Received

A good place / an asset

A new BIKING route

A problem or issue

A new WALKING route

An important destination

Place to focus investment

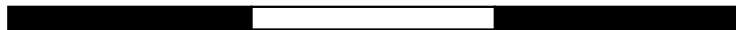
City of Glencoe Comprehensive Plan

Place to focus investment

Individual comments and final results obtained from the plan's WIKIMAPPING tool.



0 0.1 0.2 0.3 mi



TYPE: Place to focus investment

Date created: 2021-04-07 03:06:34

Data feature 410514

Comment received:

Reaching out to developers for more single family homes

Legend

POINT Information Received

LINE Information Received



A good place / an asset

A new BIKING route



A problem or issue

A new WALKING route



An important destination

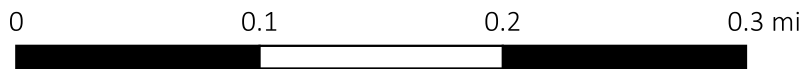


Place to focus investment

City of Glencoe Comprehensive Plan

Place to focus investment

Individual comments and final results obtained from the plan's WIKIMAPPING tool.



TYPE: Place to focus investment

Date created: 2021-04-07 03:09:08

Data feature 410515

Comment received:

Residential homes

Legend

POINT Information Received

A good place / an asset

A problem or issue

An important destination

Place to focus investment

LINE Information Received

A new BIKING route

A new WALKING route

City of Glencoe Comprehensive Plan

Place to focus investment

Individual comments and final results obtained from the plan's WIKIMAPPING tool.



TYPE: Place to focus investment

Date created: 2020-11-23 22:33:58

Data feature 406517

Comment received:

Use Railroad for possible Warehouse space and use Hwy 212

Legend

POINT Information Received	LINE Information Received
A good place / an asset	A new BIKING route
A problem or issue	A new WALKING route
An important destination	
Place to focus investment	

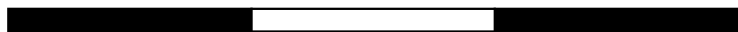
City of Glencoe Comprehensive Plan

Place to focus investment

Individual comments and final results obtained from the plan's WIKIMAPPING tool.



0 0.1 0.2 0.3 mi



TYPE: Place to focus investment

Date created: 2021-04-07 03:14:04

Data feature 410517

Comment received:

Retail shops

Legend

POINT Information Received

A good place / an asset

A problem or issue

An important destination

Place to focus investment

LINE Information Received

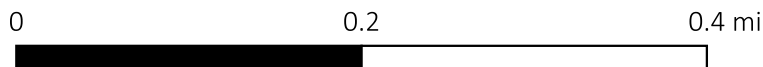
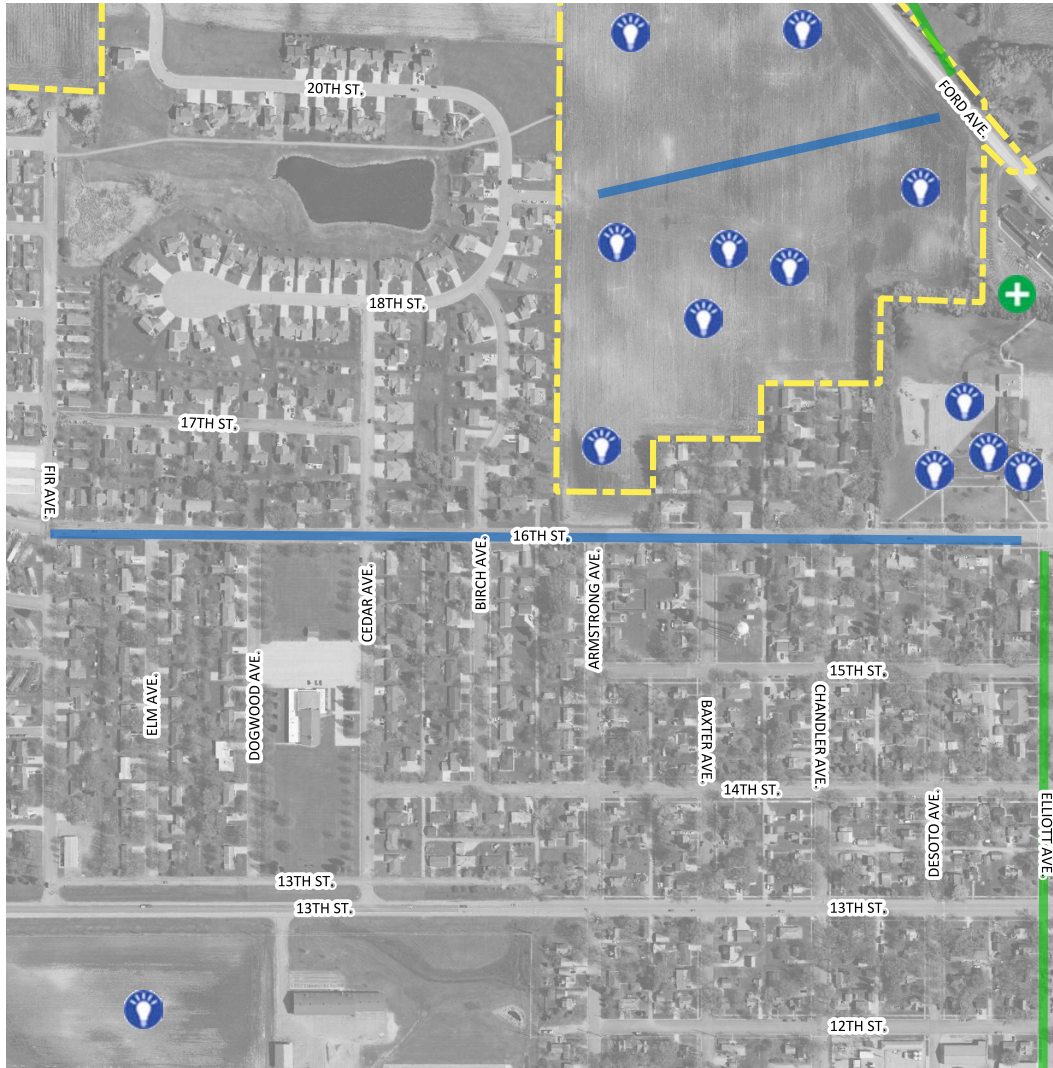
A new BIKING route

A new WALKING route

City of Glencoe Comprehensive Plan

A new WALKING route

Individual comments and final results obtained from the plan's WIKIMAPPING tool.



TYPE: A new WALKING route

Date created: 2020-12-17 12:41:57

Data feature 1302187

Comment received:

No sidewalk on both sides on a busy road. The kids enjoy biking and walking around this area but I worry about them going on 16th especially as the sun goes down that it will be hard to see them. They also have to go out in the road on their bikes in order to get around parked cars.

Legend

- | POINT Information Received | LINE Information Received |
|----------------------------|---------------------------|
| A good place / an asset | A new BIKING route |
| A problem or issue | A new WALKING route |
| An important destination | |
| Place to focus investment | |

City of Glencoe Comprehensive Plan

A new WALKING route

Individual comments and final results obtained from the plan's WIKIMAPPING tool.



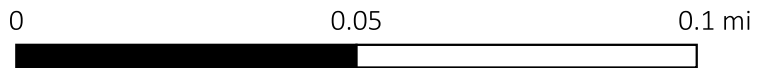
TYPE: A new WALKING route

Date created: 2020-11-30 17:24:29

Data feature 1294575


Comment received:


new walking trail along the river?



Legend

POINT Information Received

 A good place / an asset

 A problem or issue

 An important destination

 Place to focus investment

LINE Information Received

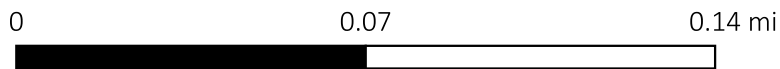
 A new BIKING route

 A new WALKING route

City of Glencoe Comprehensive Plan

A new WALKING route

Individual comments and final results obtained from the plan's WIKIMAPPING tool.



TYPE: A new WALKING route

Date created: 2021-01-19 22:51:57

Data feature 1305380

Comment received:

Legend

POINT Information Received

LINE Information Received



A good place / an asset

A new BIKING route



A problem or issue

A new WALKING route



An important destination

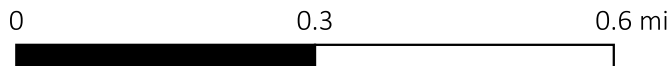


Place to focus investment

City of Glencoe Comprehensive Plan

A new WALKING route

Individual comments and final results obtained from the plan's WIKIMAPPING tool.



TYPE: A new WALKING route

Date created: 2021-02-09 21:41:21

Data feature 1305695

Comment received:

A river walk like the one in Hutchinson, for some in-town walking and nature. It could have under passes near roads if needed. Sculptures, picnic tables, small benches, gazebo, or parks along it would be nice.

Legend

POINT Information Received

- + A good place / an asset
- A problem or issue
- ★ An important destination
- 💡 Place to focus investment

LINE Information Received

- A new BIKING route
- A new WALKING route

City of Glencoe Comprehensive Plan

A new WALKING route

Individual comments and final results obtained from the plan's WIKIMAPPING tool.



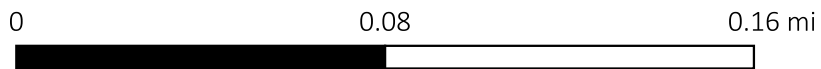
TYPE: A new WALKING route

Date created: 2021-02-09 22:06:19

Data feature 1305696

Comment received:

Extend current walking/nature trail to loop around the whole animal sanctuary.



Legend

POINT Information Received

- A good place / an asset
- A problem or issue
- An important destination
- Place to focus investment

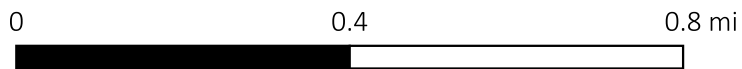
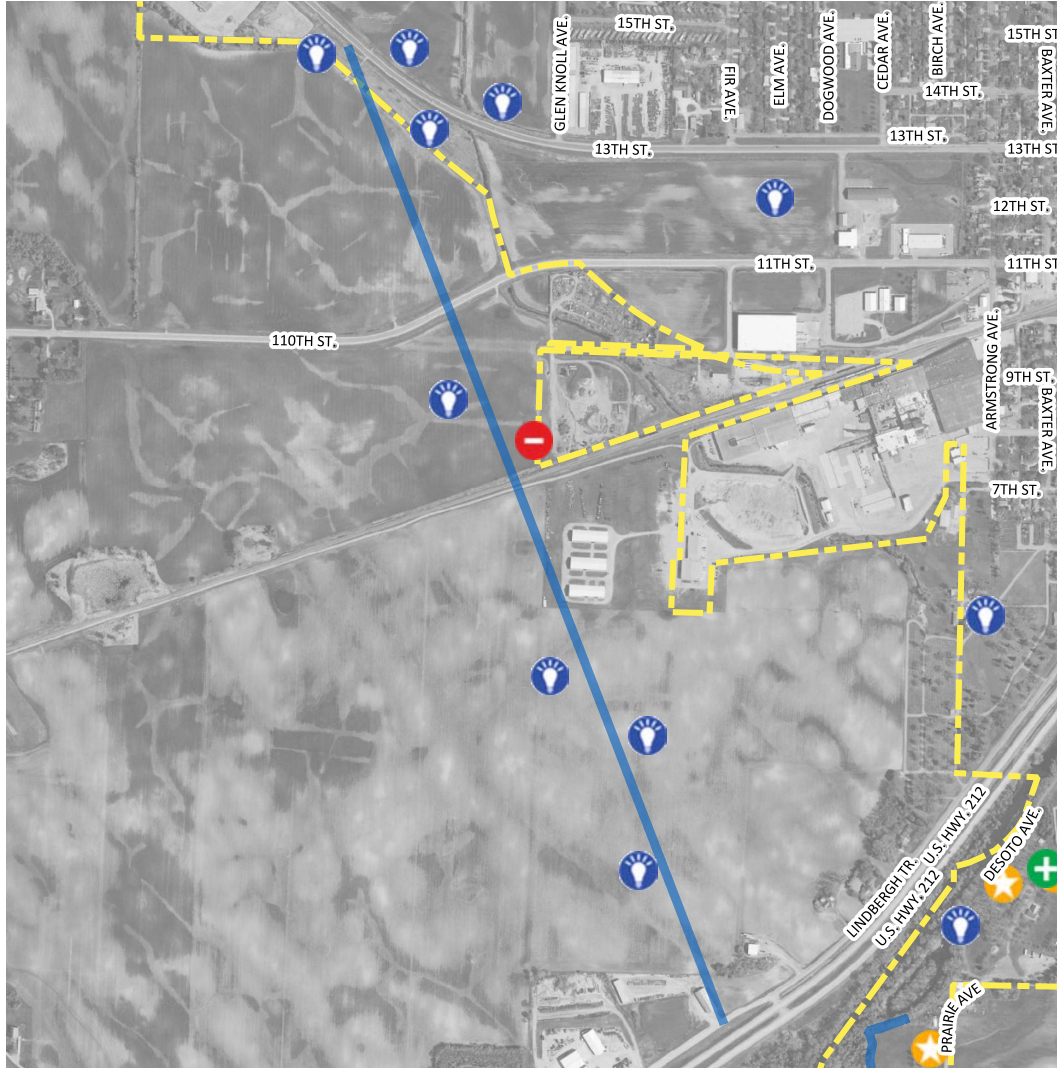
LINE Information Received

- A new BIKING route
- A new WALKING route

City of Glencoe Comprehensive Plan

A new WALKING route

Individual comments and final results obtained from the plan's WIKIMAPPING tool.



TYPE: A new WALKING route

Date created: 2020-11-25 02:33:00

Data feature 1294554

Comment received:

A new HWY 22 Truck bi-pass. It could be designed with a walking/biking trail along side

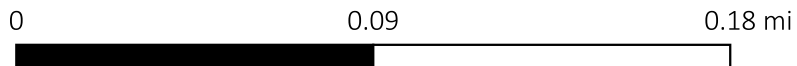
Legend

- | POINT Information Received | LINE Information Received |
|----------------------------|---------------------------|
| A good place / an asset | A new BIKING route |
| A problem or issue | A new WALKING route |
| An important destination | |
| Place to focus investment | |

City of Glencoe Comprehensive Plan

A new WALKING route

Individual comments and final results obtained from the plan's WIKIMAPPING tool.



TYPE: A new WALKING route

Date created: 2020-11-25 02:14:22

Data feature 1294553

Comment received:

New walking/biking path with limestone surface

Legend

POINT Information Received

- A good place / an asset
- A problem or issue
- An important destination
- Place to focus investment

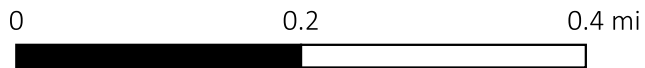
LINE Information Received

- A new BIKING route
- A new WALKING route

City of Glencoe Comprehensive Plan

A new WALKING route

Individual comments and final results obtained from the plan's WIKIMAPPING tool.



TYPE: A new WALKING route

Date created: 2020-11-25 02:12:32

Data feature 1294552

Comment received:

New walking/biking path w/limestone surface

Legend

POINT Information Received

LINE Information Received

A good place / an asset

A new BIKING route

A problem or issue

A new WALKING route

An important destination

Place to focus investment

City of Glencoe Comprehensive Plan

A new WALKING route

Individual comments and final results obtained from the plan's WIKIMAPPING tool.



TYPE: A new WALKING route

Date created: 2020-11-23 16:41:21

Data feature 1294550

Comment received:

walking and biking path

0 0.03 0.06 mi



Legend

POINT Information Received



A good place / an asset



A problem or issue



An important destination



Place to focus investment

LINE Information Received

 A new BIKING route

 A new WALKING route

City of Glencoe Comprehensive Plan

A new WALKING route

Individual comments and final results obtained from the plan's WIKIMAPPING tool.



TYPE: A new WALKING route

Date created: 2021-04-07 03:11:46

Data feature 1309585

Comment received:

walking path along future morningside

Legend

POINT Information Received

- A good place / an asset
- A problem or issue
- An important destination
- Place to focus investment

LINE Information Received

- A new BIKING route
- A new WALKING route

City of Glencoe Comprehensive Plan

A new WALKING route

Individual comments and final results obtained from the plan's WIKIMAPPING tool.



TYPE: A new WALKING route

Date created: 2021-04-07 03:13:21

Data feature 1309586

Comment received:

0 0.01 0.02 mi



Legend

POINT Information Received



A good place / an asset



A problem or issue



An important destination



Place to focus investment

LINE Information Received

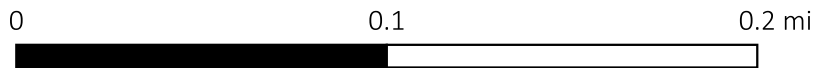
 A new BIKING route

 A new WALKING route

City of Glencoe Comprehensive Plan

A new BIKING route

Individual comments and final results obtained from the plan's WIKIMAPPING tool.



TYPE: A new BIKING route

Date created: 2020-11-23 16:39:33

Data feature 1294548

Comment received:

new walking and biking path

Legend

POINT Information Received

- A good place / an asset
- A problem or issue
- An important destination
- Place to focus investment

LINE Information Received

- A new BIKING route
- A new WALKING route

City of Glencoe Comprehensive Plan

A new BIKING route

Individual comments and final results obtained from the plan's WIKIMAPPING tool.



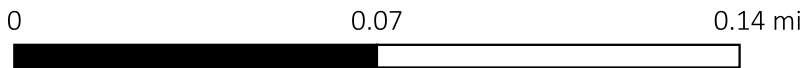
TYPE: A new BIKING route

Date created: 2020-11-23 16:40:58

Data feature 1294549

Comment received:

walking and biking path



Legend

POINT Information Received

- A good place / an asset
- A problem or issue
- An important destination
- Place to focus investment

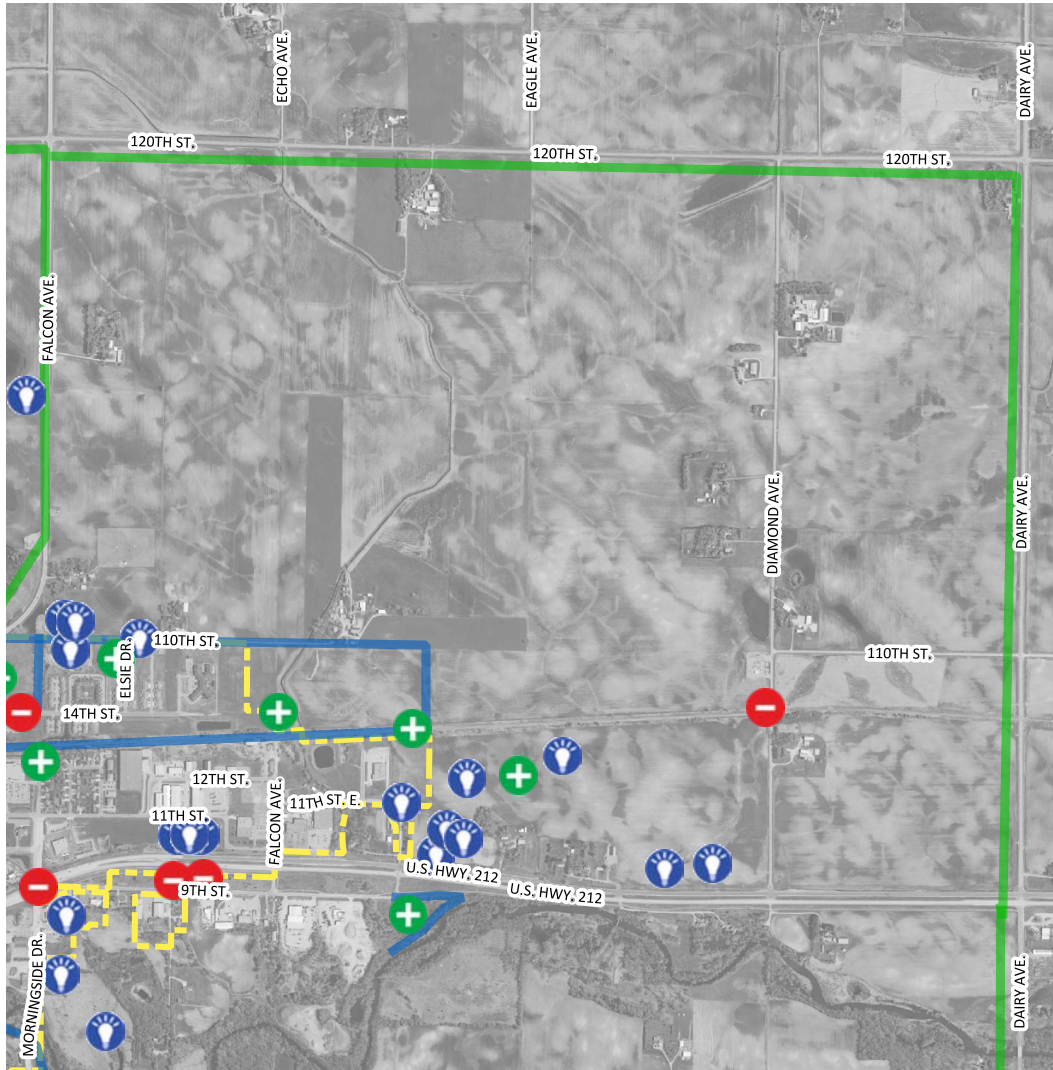
LINE Information Received

- A new BIKING route
- A new WALKING route

City of Glencoe Comprehensive Plan

A new BIKING route

Individual comments and final results obtained from the plan's WIKIMAPPING tool.



TYPE: A new BIKING route

Date created: 2021-04-06 18:29:13

Data feature 1309577

Comment received:

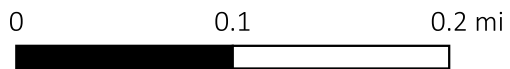
Legend

- | POINT Information Received | LINE Information Received |
|----------------------------|---------------------------|
| A good place / an asset | A new BIKING route |
| A problem or issue | A new WALKING route |
| An important destination | |
| Place to focus investment | |

City of Glencoe Comprehensive Plan

A new BIKING route

Individual comments and final results obtained from the plan's WIKIMAPPING tool.



TYPE: A new BIKING route

Date created: 2021-03-18 16:12:06

Data feature 1308524

Comment received:

Legend

POINT Information Received

- A good place / an asset
- A problem or issue
- An important destination
- Place to focus investment

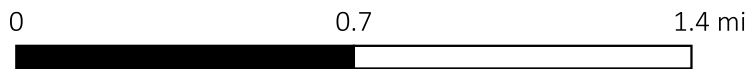
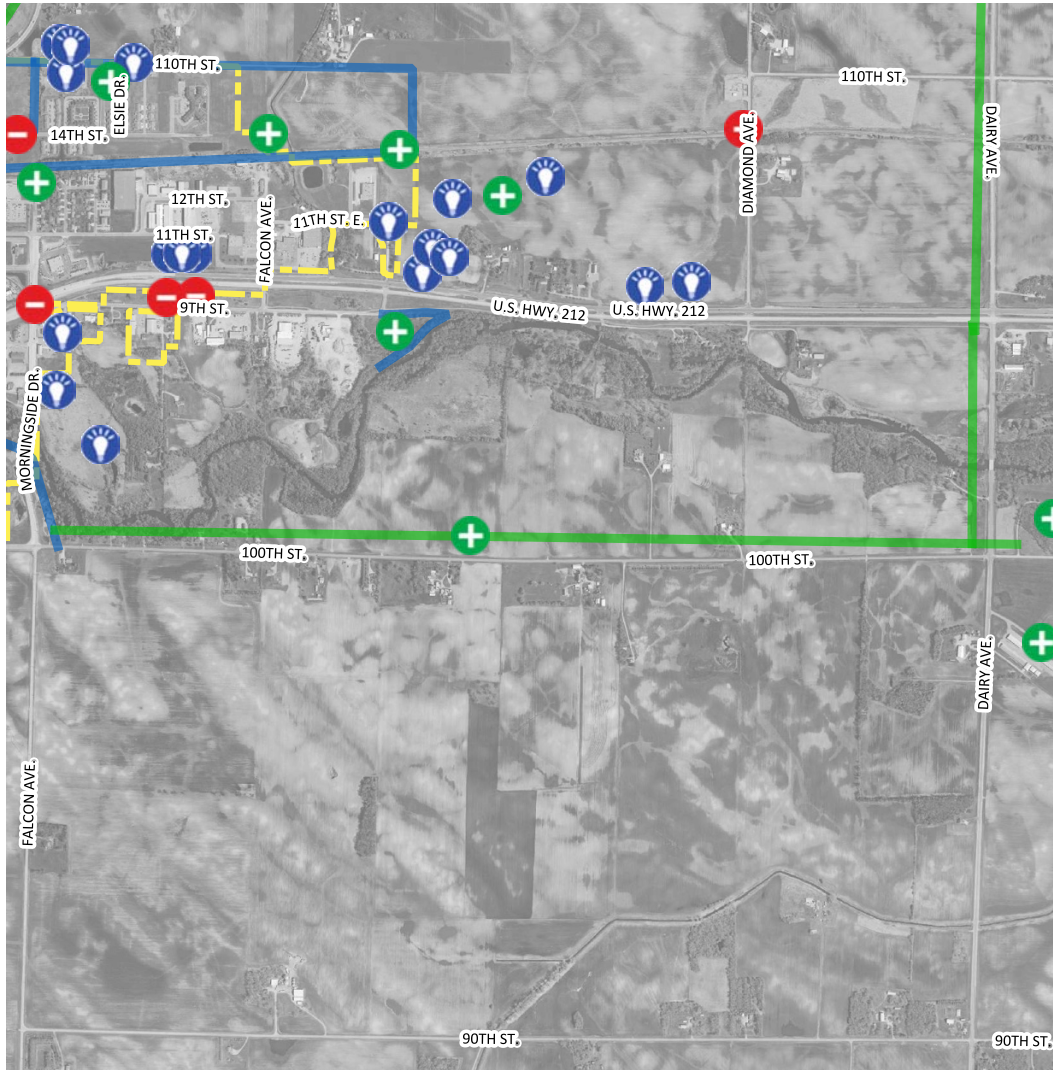
LINE Information Received

- A new BIKING route
- A new WALKING route

City of Glencoe Comprehensive Plan

A new BIKING route

Individual comments and final results obtained from the plan's WIKIMAPPING tool.



TYPE: A new BIKING route

Date created: 2021-03-18 16:11:23

Data feature 1308523

Comment received:

Legend

POINT Information Received

- A good place / an asset
- A problem or issue
- An important destination
- Place to focus investment

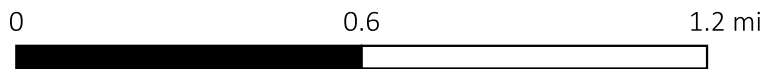
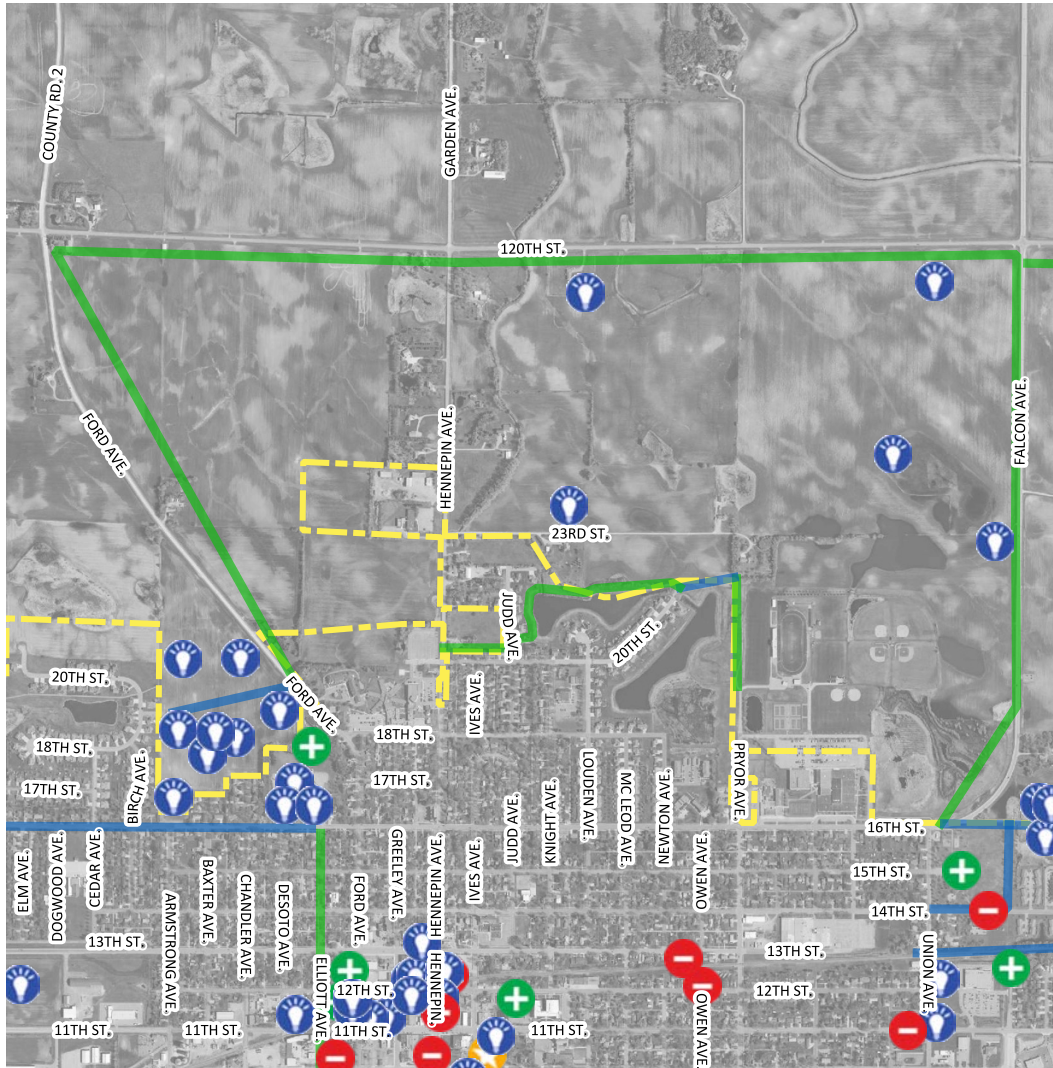
LINE Information Received

- A new BIKING route
- A new WALKING route

City of Glencoe Comprehensive Plan

A new BIKING route

Individual comments and final results obtained from the plan's WIKIMAPPING tool.



TYPE: A new BIKING route

Date created: 2021-03-04 02:02:38

Data feature 1305943

Comment received:

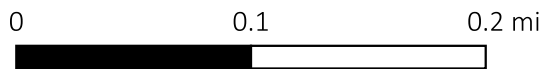
Legend

POINT Information Received	LINE Information Received
A good place / an asset	A new BIKING route
A problem or issue	A new WALKING route
An important destination	
Place to focus investment	

City of Glencoe Comprehensive Plan

A new BIKING route

Individual comments and final results obtained from the plan's WIKIMAPPING tool.



TYPE: A new BIKING route

Date created: 2021-01-14 16:25:46

Data feature 1305358

Comment received:

Would be a good perimeter bike and walk trail.

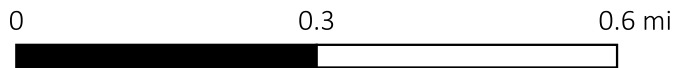
Legend

- | POINT Information Received | LINE Information Received |
|----------------------------|---------------------------|
| A good place / an asset | A new BIKING route |
| A problem or issue | A new WALKING route |
| An important destination | |
| Place to focus investment | |

City of Glencoe Comprehensive Plan

A new BIKING route

Individual comments and final results obtained from the plan's WIKIMAPPING tool.



TYPE: A new BIKING route

Date created: 2020-12-01 14:43:07

Data feature 1294577

Comment received:

Legend	
POINT Information Received	LINE Information Received
A good place / an asset	A new BIKING route
A problem or issue	A new WALKING route
An important destination	
Place to focus investment	